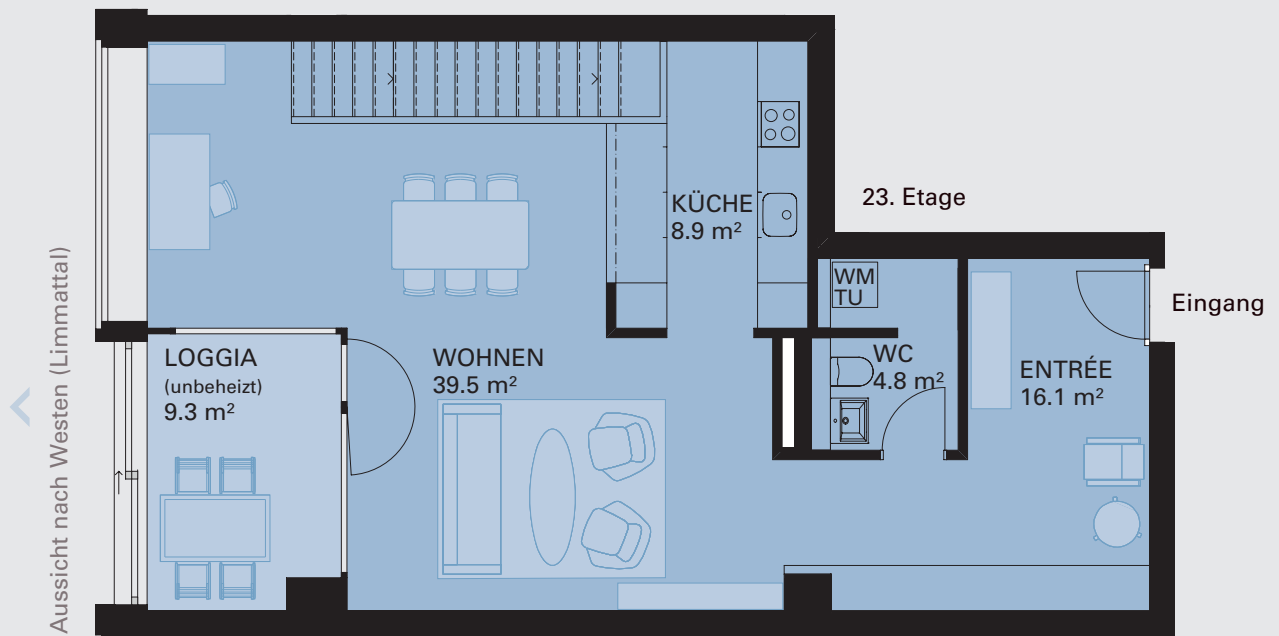


2.5-Zimmer-Duplex-Penthouse

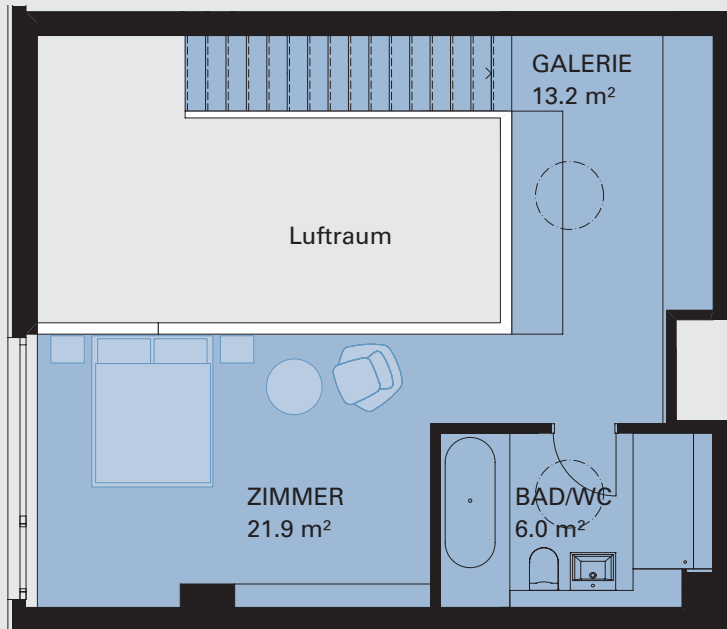
A 23.400 / 119.1 m² Wohnfläche



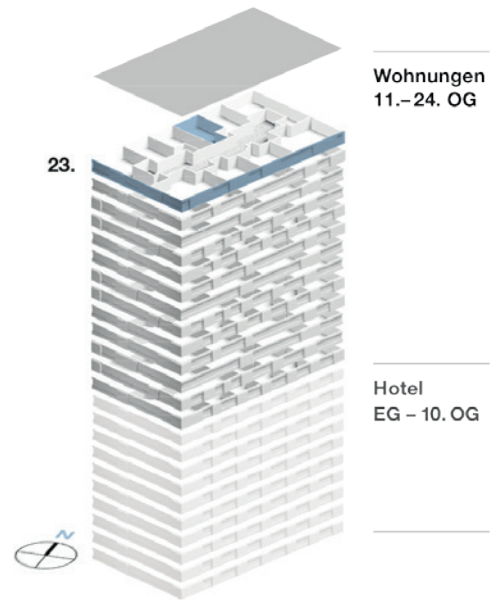
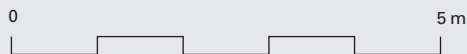
PFINGST
WEIDSTR

NR.98

Aussicht nach Westen (Limmattal)



1:100



Beratung und Verkauf

MSW Immobilien AG
Seewürfel 3
Seefeldstrasse 277
CH-8008 Zürich
Telefon +41 43 499 40 40
info@msw-immobilien.ch

Architektur

Gmür & Gschwentner Architekten AG,
CH-Zürich